

PART OF N.W. 1/4 OF S.W. 1/4 OF
SECTION 16, T. 6 N., R. 1 W., S. L. B. & M.

46-3

TAXING UNIT: 25

IN OGDEN CITY

PREFIX: 12-046

SCALE 1" = 50'

PARCEL No.
 0016 TO 0021
 0025 TO 0034
 0064
 0069
 0073

SEE PAGE 47

TOWNSIDE PARK

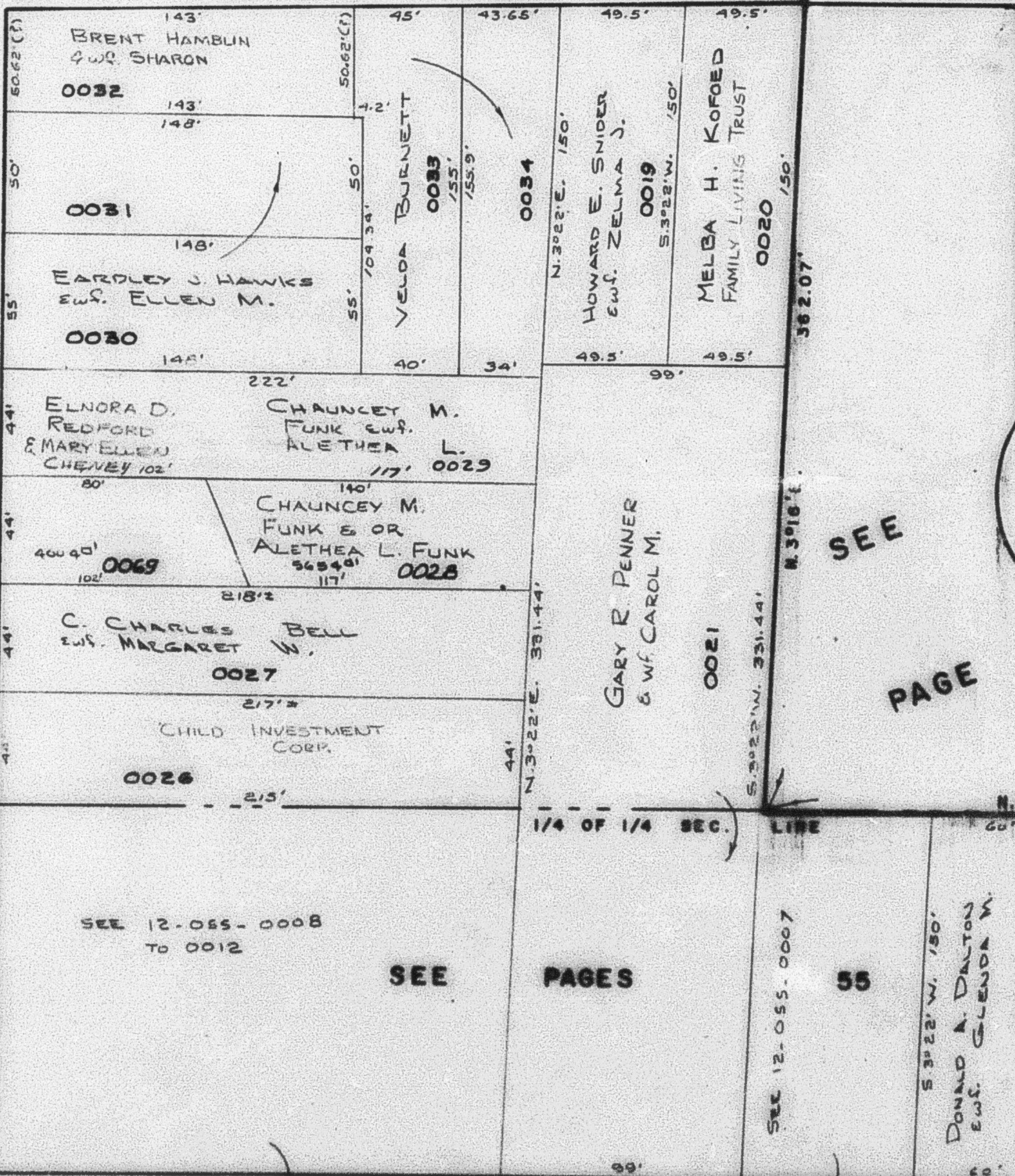
6TH. STREET

S. 89° 09' 45" E. OGDEN CITY 0064

ADAMS AVENUE

OGDEN CITY 0025

MON. LINE N. 0° 58' E.
 SEC. LINE N. 102° 47' E.



PORTER AVENUE

(550 EAST)

SUBDIVISION

STACI COURT

(650 SOUTH)

SEE PAGE 131

SEE PAGES 55

SEE P 46.2

7TH. STREET

STREET